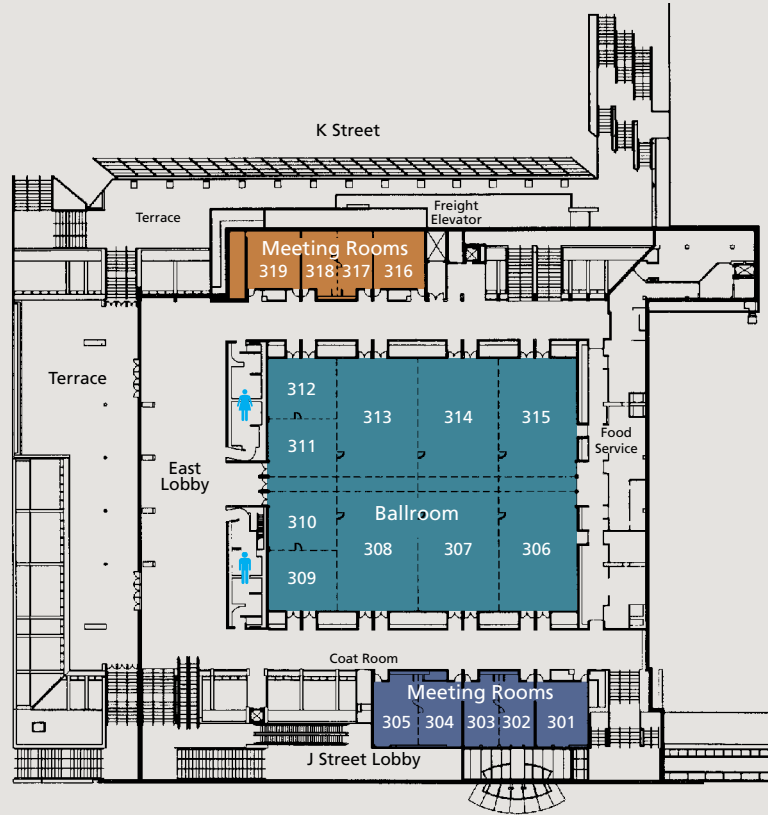




BALLROOM LEVEL



THIRD FLOOR	Total Sq.Ft. (Approx.)	Dimensions (Approx.)	Ceiling Height	Theater Seating	Classroom 4 per table 30" table	Classroom 4 per table 18" table	Hollow Square	Dining 60" Rounds 8 per table	Dining 72" Rounds 10 per table	Reception
301	952	28'x34'	11'	91	32	40	36	48	50	102
302	646	19'x34'	11'	49	16	20	32	24	20	70
303	646	19'x34'	11'	49	16	20	32	24	20	70
304	850	25'x34'	11'	70	32	40	36	48	50	90
305	816	24'x34'	11'	70	32	40	36	48	50	94
<hr/>										
306	2,772	42'x66'	25'	280	144	176	72	160	120	337
307	2,904	44'x66'	25'	280	144	176	80	160	120	310
308	2,904	44'x66'	25'	280	144	176	80	160	120	310
309	1,258	37'x34'	25'	96	48	60	48	72	60	124
310	1,184	37'x32'	25'	128	48	60	48	72	60	124
311	1,184	37'x32'	25'	128	48	60	48	72	60	124
312	1,258	37'x34'	25'	96	48	60	48	72	60	124
313	2,904	44'x66'	25'	280	144	176	80	160	120	310
314	2,904	44'x66'	25'	280	144	176	80	160	120	310
315	2,772	42'x66'	25'	280	144	176	72	160	120	296
Ballroom: 306-315	24,282	171'x142'	25'	2,652	1,296	1,536	—	1,560	1,440	2,595
<hr/>										
316	896	28'x32'	11'	84	32	40	32	48	50	94
317	608	19'x32'	11'	49	16	20	32	24	20	70
318	576	18'x32'	11'	49	16	20	32	24	20	70
319	928	29'x32'	11'	91	32	40	32	72	50	102
East Lobby	9,000	—	—	—	—	—	—	—	—	845*

UTILITY SERVICE

Electric Power

Ballroom (west end)

- (2) 100A/3ph
- (2) 200A/3ph
- (1) 400A/3ph

Floor 30A receptacle, 208v/120v, 3ph (30' x 40' grid)

Wall 100A, 60A receptacles, 208v/120v (1 ea/room)

Telephone, video, CATV, DATA

Satellite downlink capability

Fiber optic capability

Production electrical capacity

FEATURES

Fully carpeted

Floor load 150 psf.

Ballroom subdividable into 10 rooms

9 perimeter meeting rooms

Individually controlled lighting and sound in all rooms

East lobby—9,000 sq. ft.

Landscaped terrace

CAPACITIES MAY VARY DEPENDING ON SET-UPS AND/OR SPECIAL REQUIREMENTS